



KX-NSX1000/2000

Others

-E-mail integration with Office 365-

Rev1.0 11 Oct., 2016



Panasonic

Chapter 1

Overview

- This PPT describe mechanism of Office 365 with SMTP server(NSX/NS) and how to set up.

Chapter 2

How it works?

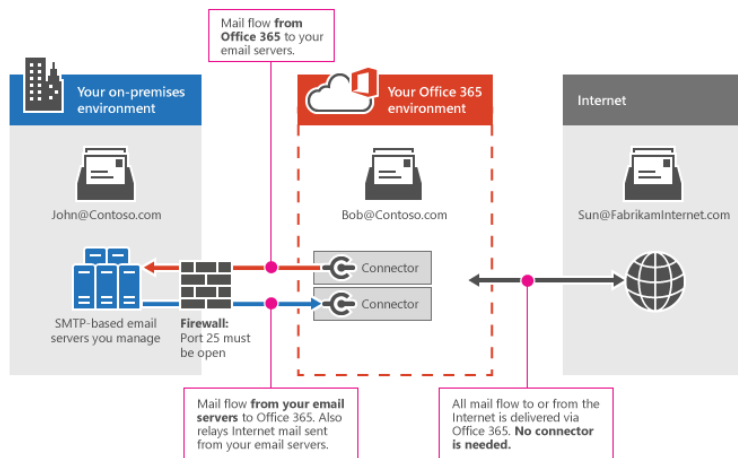
Please refer below Microsoft URL about mechanism at Office 365 side.

[https://technet.microsoft.com/en-us/library/dn751020\(v=exchg.150\).aspx](https://technet.microsoft.com/en-us/library/dn751020(v=exchg.150).aspx)

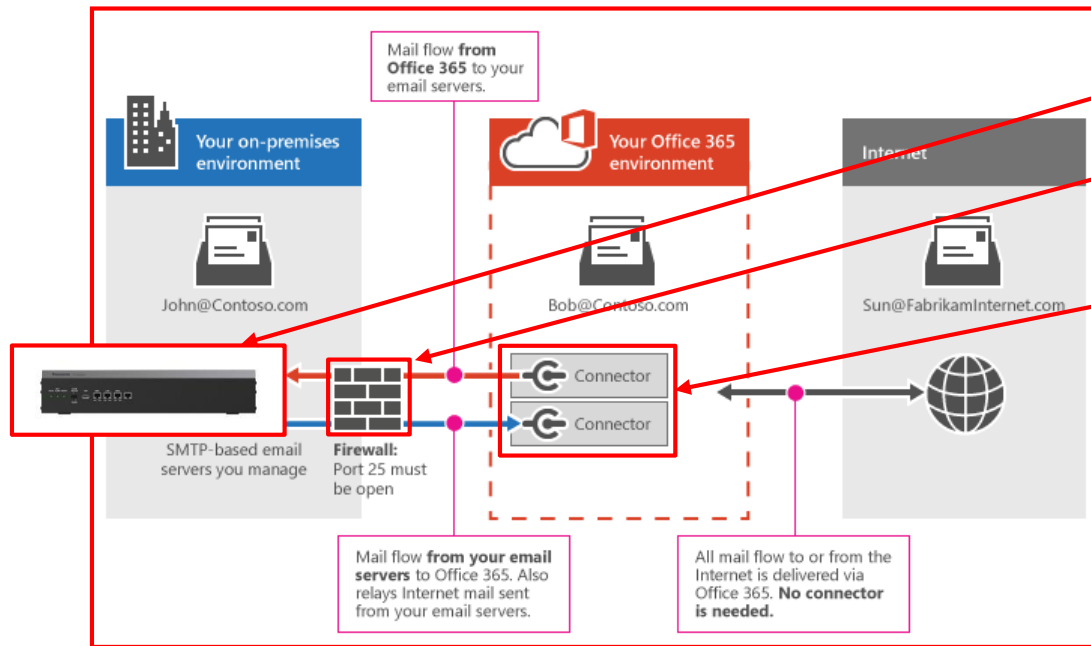
How do Office 365 connectors work with my own email servers (also called "on-premises servers")?

If you have EOP and your own email servers, or if some of your mailboxes are in Office 365 and some are on your email servers, set up connectors to enable mail flow in both directions. You can enable mail flow between Office 365 and any SMTP-based email server, such as Exchange or a third-party email server.

The diagram below shows how connectors in Office 365 (including Exchange Online or EOP) work with your own email servers.



2. How it works?



1. Set up SMTP sever at NSX/NS side.
2. Open port "25" at Firewall where NSX/NS is connected.
3. Make "Connector" at your Office 365 environment.

Chapter 3

How to program?



For ex
In case your domain is
"mar.onmicrosoft.com"

<http://mxtoolbox.com/>

if your domain is "mar.onmicrosoft.com" for example then key in this into "Domain Name" window and then press "MX Lookup". Then you will find out IP address of your office365's SMTP server.

NSX2000 Web Maintenance Console
002.03048

Login as INSTALLER Site 1 : NSX2000

Users
Supervisors
Maintenance Personnel
PBX Configuration
UM Configuration
Router Configuration
Network Service
1. IP Address/Ports
2. Server Feature
3. DHCP (LAN)
3. FTP
5. HTTP
6. NTP
7. SMTP
8. IMAP4
9. TELNET
3. Client Feature
4. Other

SMTP

Mail sending

Mail sender information name : KCC-NSX2000

Mail address : marmarfufu@mar.com

SMTP server for relay

SMTP server address
☒ IP Address : 23.103.139. XXXX
☐ Name :

SMTP server Port number : 25

SMTP over TLS
☐ Enable ☒ Disable

SMTP Authentication

SMTP Authentication
☐ Enable ☒ Disable

User name :

Password :

POP Before SMTP

POP before SMTP
☐ Enable ☒ Disable

POP server address
☒ IP Address :
☐ Name :

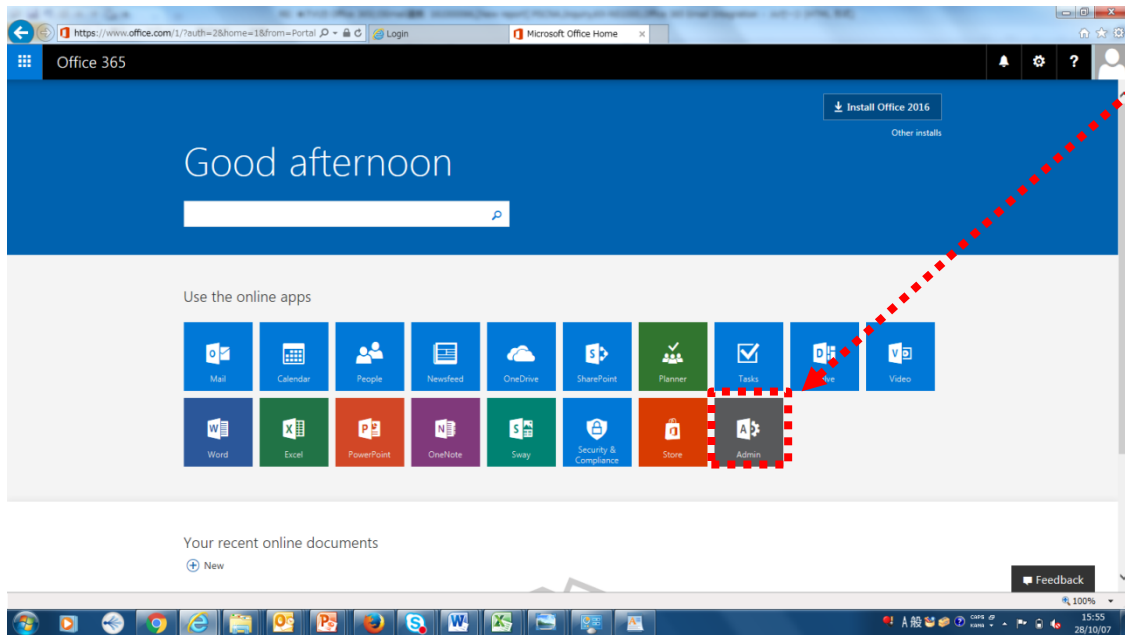
POP server Port number : 110

OK

This can be any.

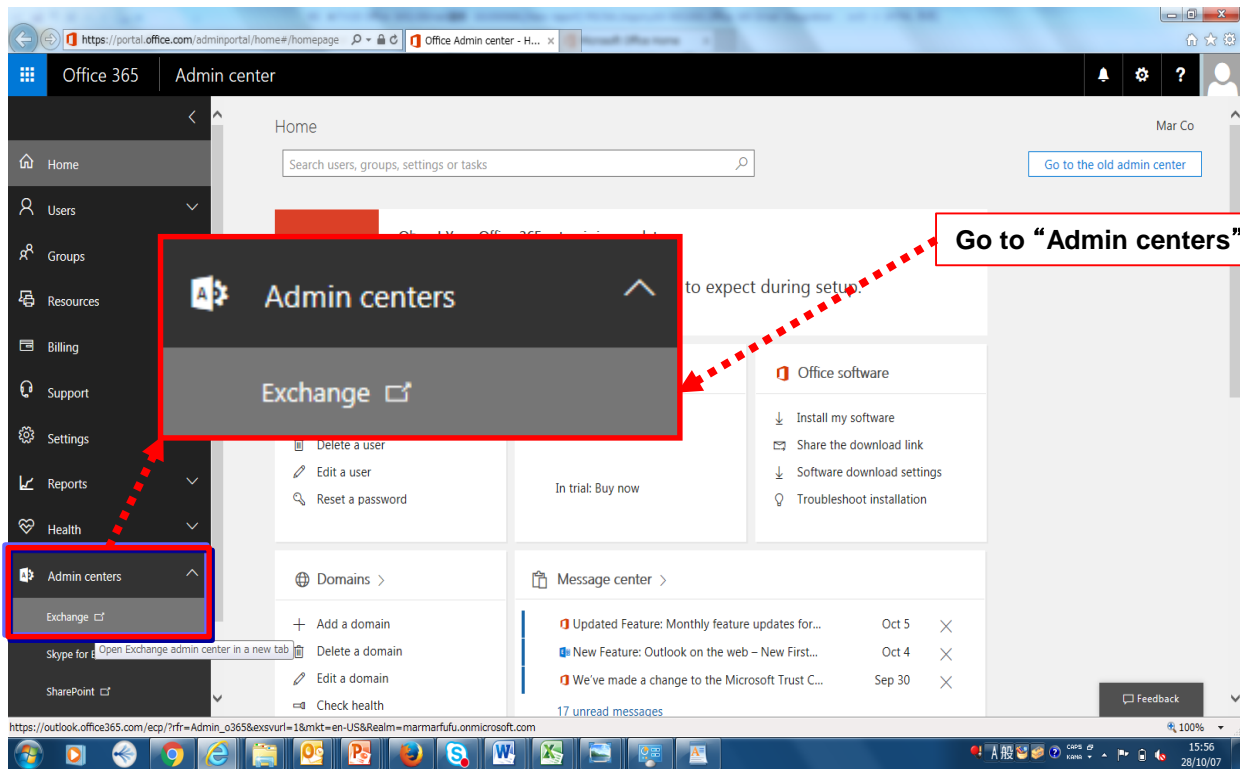
Key in IP address
you found at
<http://mxtoolbox.com/>
in previous step.

3. How to program?



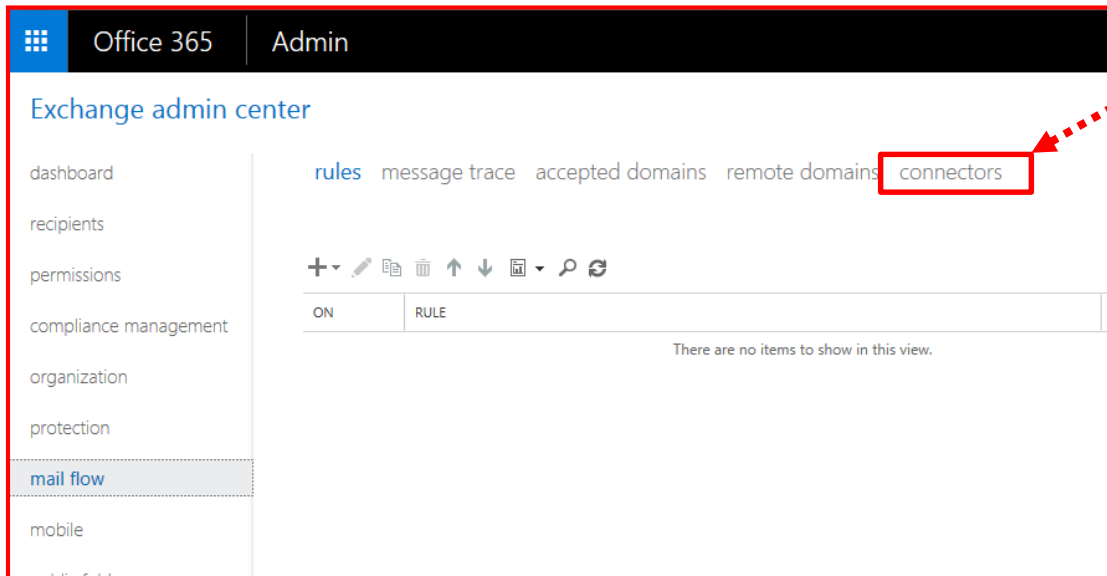
Log in Office 365 as admin.

3. How to program?



3. How to program?

The screenshot shows the Exchange Admin Center (EAC) interface. The browser address bar displays the URL: https://outlook.office365.com/ecp/?rfr=Admin_o365&exsvi. The page title is "Exchange admin center". The left sidebar contains a list of navigation items: dashboard, recipients, permissions, compliance management, organization, protection, mail flow (highlighted with a red box), mobile, public folders, and unified messaging. The main content area displays a "Welcome" message and a large "mail flow" tile (also highlighted with a red box). A red dashed arrow points from the "mail flow" tile to a callout box that says "Click 'mail flow'". The main content area is organized into four columns: "permissions" (admin roles, user roles, Outlook Web App policies), "compliance management" (in-place eDiscovery & hold, auditing, data loss prevention, retention policies, retention tags, journal rules), "organization" (groups, resources, contacts, shared, migration), and "protection" (malware filter, connection filter, spam filter, outbound spam). The "mail flow" column is also visible, containing rules, message trace, accepted domains, and remote domains.



The screenshot shows the Office 365 Admin center interface. The top navigation bar includes 'Office 365' and 'Admin'. Below this, the 'Exchange admin center' is visible. On the left sidebar, there is a list of navigation items: dashboard, recipients, permissions, compliance management, organization, protection, mail flow, and mobile. The 'mail flow' item is currently selected. In the main content area, there is a sub-navigation bar with links: rules, message trace, accepted domains, remote domains, and connectors. The 'connectors' link is highlighted with a red box. A red dashed arrow points from a text box to this link. Below the sub-navigation bar, there is a table with two columns: 'ON' and 'RULE'. The table is empty, and a message below it states 'There are no items to show in this view.'

Office 365 | Admin

Exchange admin center

dashboard recipients permissions compliance management organization protection mail flow mobile

rules message trace accepted domains remote domains connectors

ON	RULE
----	------

There are no items to show in this view.

Click "connectors"

Office 365

Admin

Exchange admin center

dashboard

recipients

permissions

compliance management

organization

protection

mail flow

rules

message trace

accepted domains

remote domains

connectors

Connectors help control the flow of email messages to and from your Office 365 organization. However, because most organizations don't need to use

Want to help us improve connectors? Just [send us feedback](#) and let us know what you liked, didn't like, or what we can do to make your experience bett

+

STATUS	NAME	FROM	TO
There are no items to show in this view.			

Click "+" to add new flow

14

New Connector - Internet Explorer
https://outlook.office365.com/ecp/Connectors/ConnectorSelection.aspx?ActivityCorrelationID=447679f6-3990-

Select your mail flow scenario

Specify your mail flow scenario, and we'll let you know if you need to set up a connector.
[Learn more](#)

From:
Select an item

To:
Select an item

From:
Your organization's email server

To:
Office 365

Change "From" and "To" as below and then click "Next"

You need to create a connector for this mail flow scenario. When this connector is set up, Office 365 will accept messages from your organization's email server and send the messages to recipients on your behalf. To complete this scenario, you'll also need to configure your email server to send email messages directly to Office 365. [Learn more about configuring your email server](#)

Internet: For inbound email, this refers to email that's sent from the Internet to Office 365 (not to your email server or partner organization). For outbound email, it refers to email that's sent from Office 365 to the Internet.

Next Cancel

New Connector - Internet Explorer
https://outlook.office365.com/ecp/Connectors/InboundOnPremConnector.aspx

New connector

This connector lets Office 365 accept email messages from your organization's email server (also called an on-premises server).

Name:
NSX

Description:

What do you want to do after connector is saved?

- ☒ Turn it on
- ☒ Retain internal Exchange email headers (recommended)

Next Cancel

Put name for this connection.
And then click "Next"

3. How to program?

New Connector - Internet Explorer
https://outlook.office365.com/ecp/Connectors/InboundOnPremConnector.aspx

New connector

How should Office 365 identify email from your email server?

☐ By verifying that the subject name on the certificate that the sending server uses authenticate with Office 365 matches this domain name (recommended)
Example: contoso.com or *.contoso.com

☒ By verifying that the IP address of the sending server matches one of these IP addresses that belong to your organization

+

Add

Office 365 will only accept messages through this connector if the sender domain configured as an accepted domain for your Office 365 organization. [Learn more](#)

Back Next Cancel

add IP address -- Web ページ ダイアログ
https://outlook.office365.com/ecp/C

add ip address

Specify a single IP address or multiple IP addresses in CIDR notation.
Example: 10.5.3.2 or 10.3.1.5/24

118.22.15.XXX

OK Cancel

IP addresses must be specified in the format nnn.nnn.nnn.nnn where nnn is a number from 0 to 255. You can also specify a CIDR notation.

Click “+” to add global IP address of router where NS/NSX is connected. Then click “OK”.

3. How to program?

New Connector - Internet Explorer

https://outlook.office365.com/ecp/Connectors/InboundOnPremConnector.aspx

New connector

How should Office 365 identify email from your email server?

☐ By verifying that the subject name on the certificate that the sending server uses to authenticate with Office 365 matches this domain name (recommended)

Example: contoso.com or *.contoso.com

☒ By verifying that the IP address of the sending server matches one of these IP addresses that belong to your organization

+ -

118.22.15.XXX

Office 365 will only accept messages through this connector if the sender domain is configured as an accepted domain for your Office 365 organization. [Learn more](#)

Back Next Cancel

Confirm IP address is assigned then click "Next"

New Connector - Internet Explorer

https://outlook.office365.com/ecp/Connectors/InboundOnPremConnector.aspx

New connector

Confirm your settings
Before saving, make sure these are the settings you want to configure.

Mail flow scenario
From: Your organization's email server
To: Office 365

Name
NSX

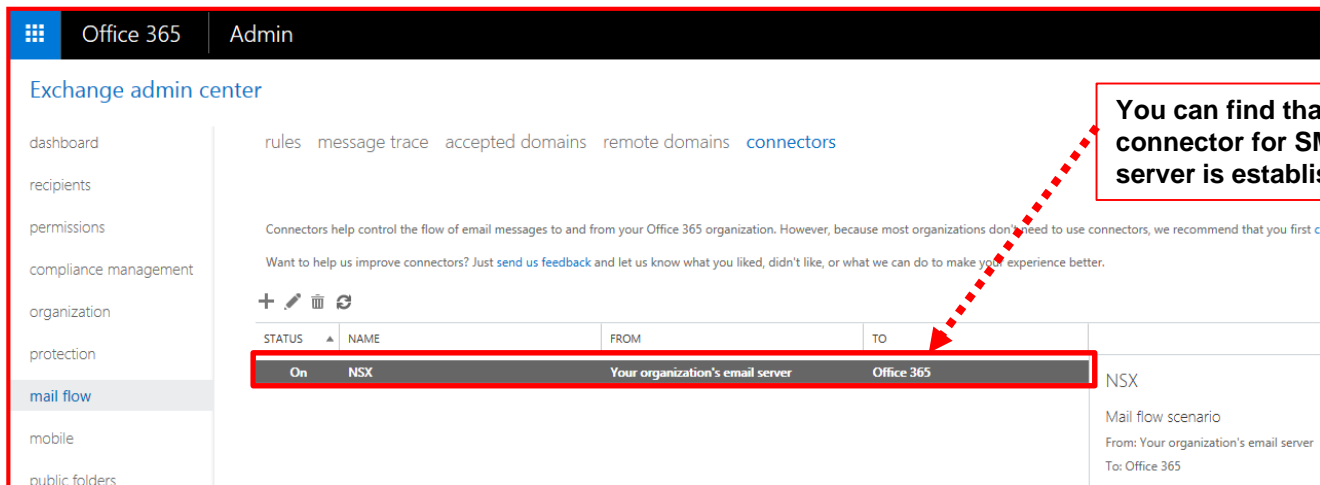
Description
None

Status
Turn it on after saving

How to identify email sent from your email server
Identify email coming from your email server by verifying that the sending server's IP address is within these IP address ranges: 118.22.15.xxx and the sender domain is an accepted domain for your organization.

Back Cancel

Confirm setting and then click "Save".



Office 365 | Admin

Exchange admin center

dashboard recipients permissions compliance management organization protection **mail flow** mobile public folders

rules message trace accepted domains remote domains **connectors**

Connectors help control the flow of email messages to and from your Office 365 organization. However, because most organizations don't need to use connectors, we recommend that you first check if you need a connector.

Want to help us improve connectors? Just [send us feedback](#) and let us know what you liked, didn't like, or what we can do to make your experience better.

STATUS	NAME	FROM	TO
On	NSX	Your organization's email server	Office 365

NSX

Mail flow scenario

From: Your organization's email server

To: Office 365

**You can find that
connector for SMTP
server is established.**

Thank you ! The END

Appendix

11.1_NSX1000_2000_Others_Office365_Rev1.0_11Oct2016.pptx
- 1st release